

**WATER LAW DOCTRINE AND THE ORIGINS OF  
THE ALL-AMERICAN CANAL**

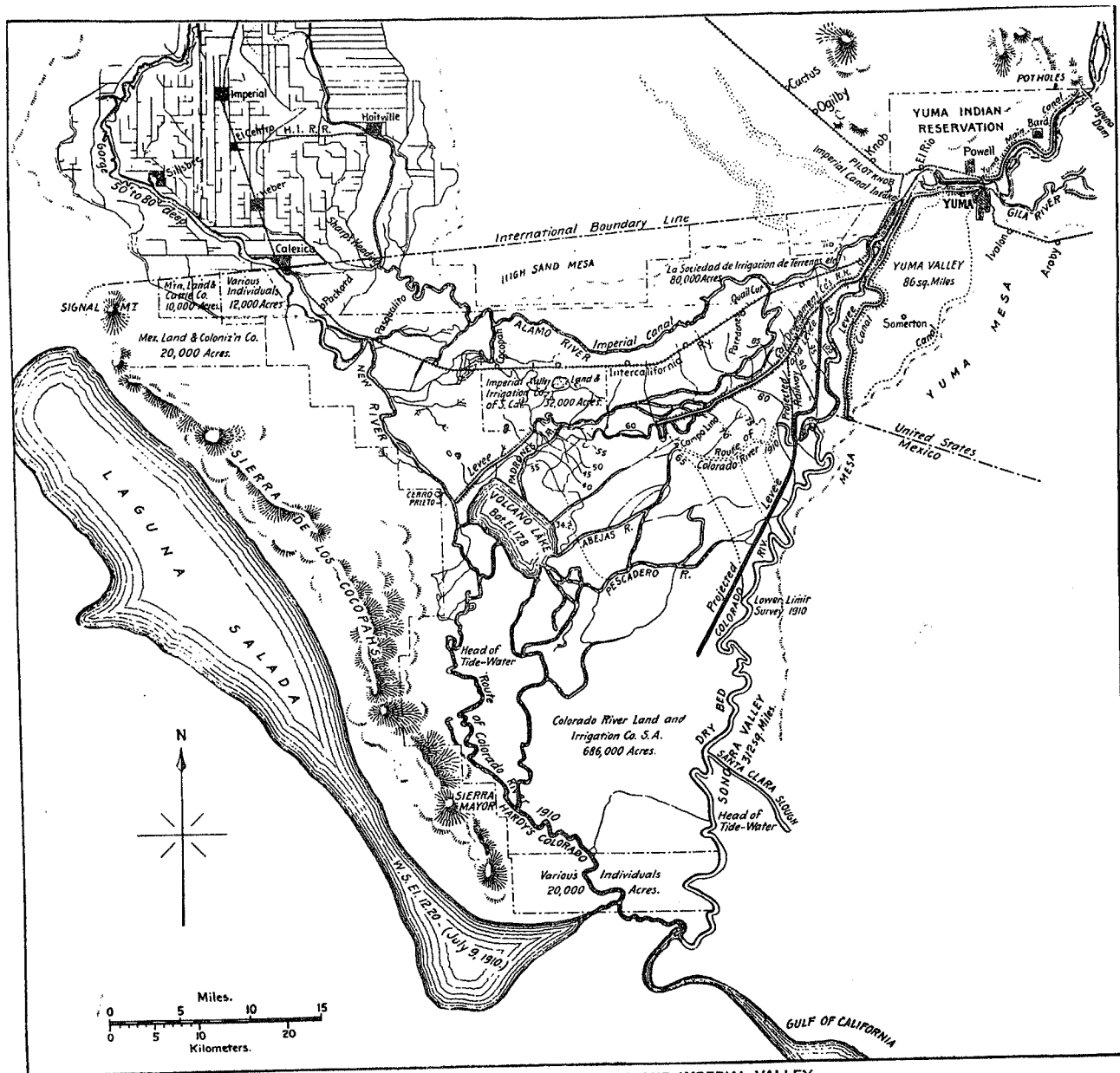
**Peter L. Reich, J.D., Ph.D.  
Professor of Law, Whittier Law School**

**California Water Law Symposium, 2013  
U.C. Davis School of Law**

- I. Mexican and U.S. Water Law Doctrine, Surface and Groundwater.
  
- II. Water Rights Contracts Across the Border, 1896-1907.
  
- III. Problems in Trans-border Water Transfers, 1907-1928.
  
- IV. International Negotiations and Canal Construction, 1928-1942.
  
- V. A Legacy of Shared Problems and Prospects.

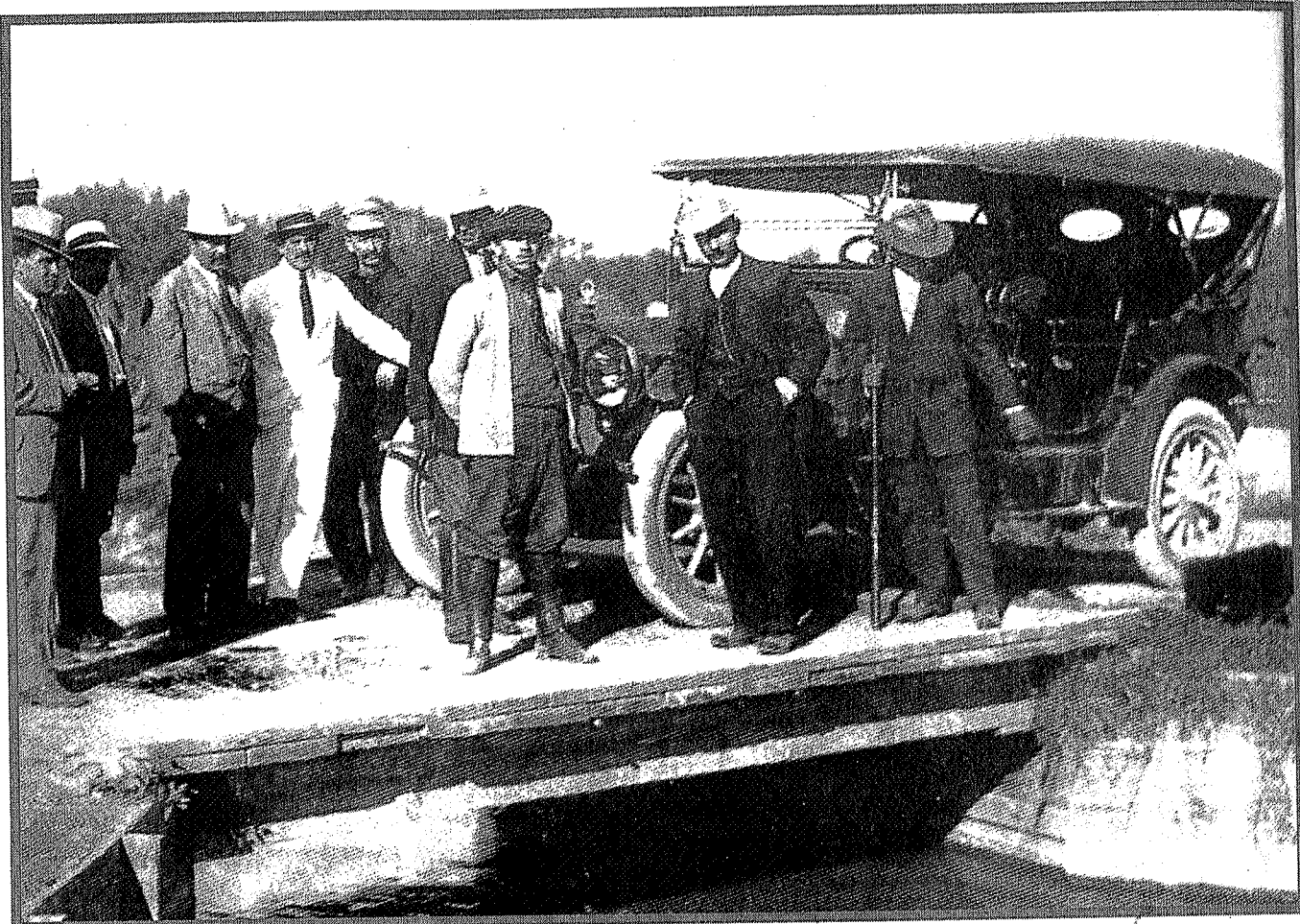
EXHIBIT NO. 2

(1910)



MAP OF THE LOWER COLORADO DELTA AND IMPERIAL VALLEY.  
 (Showing the Imperial Canal, the course of the Colorado River, its high water outlets and the general alignment of works for the purpose of protecting the lands and property of the Imperial Valley. Compiled from various existing maps supplemented by surveys along the Colorado River made under the direction of J. A. Ockerson, Consulting Engineer, in August and September, 1910.)

Dowd, M. J., The Colorado River Flood-Protection Works of Imperial Irrigation District: History & Cost (IID, 1951).



Canal de irrigación, en el Valle de Mexicali, 1917

Irrigation Canal, Mexicali Valley, 1917. UABC photo collection.

Voces de la Península: Revista de Geografía e Historia de Baja California, año 1, no. 2 (Abril-Junio, 2003).

**Millions for an**

Do not sign the 2 1-2 million

**All-American**

dollar bond petition. Stand pat for

**Canal, but not**

an all-American canal. Let's take our

**one additional**

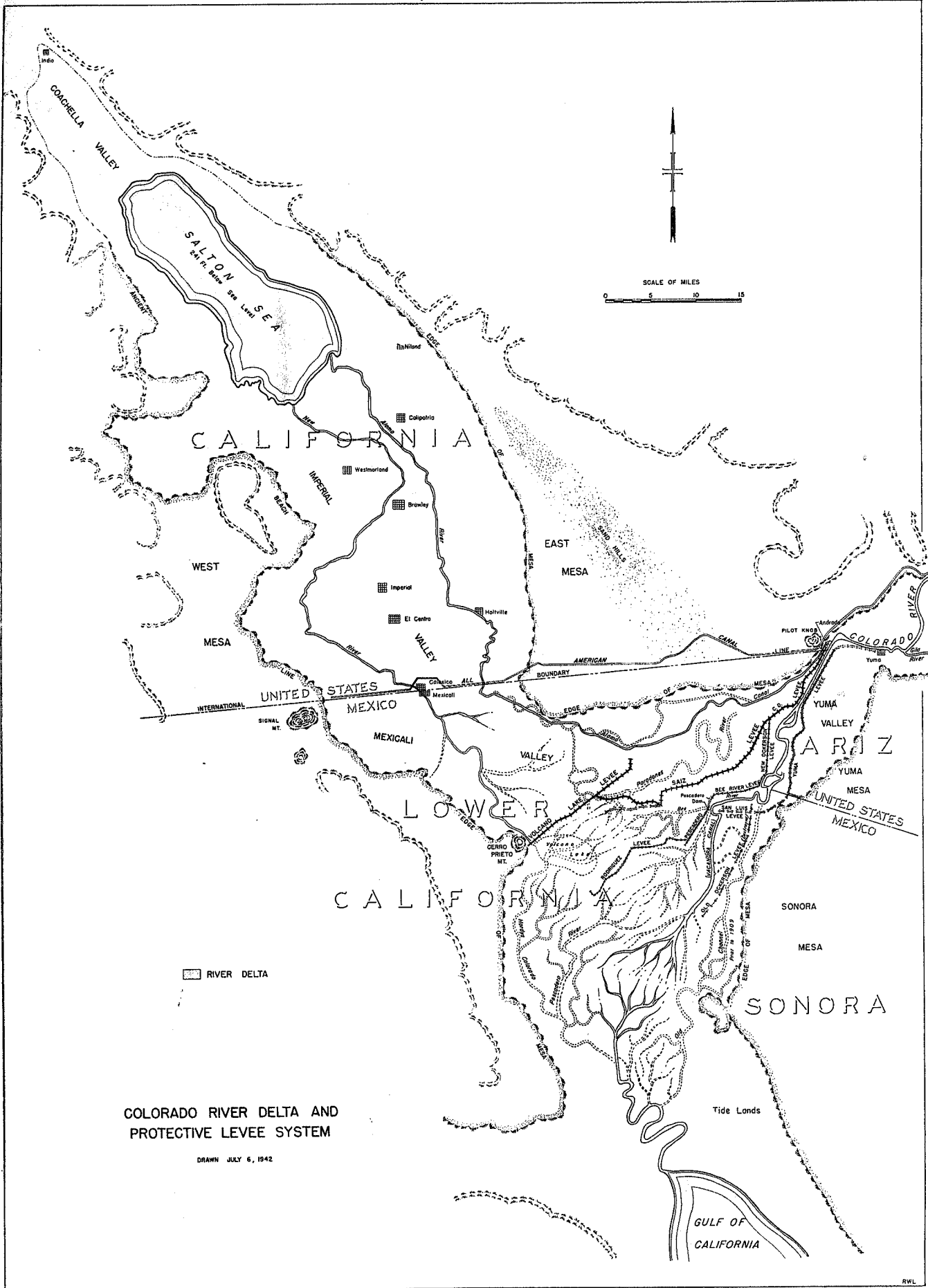
water from the river above the

**cent for the old**

million acres in Mexico.

**canal in Mexico**

(1942)



COLORADO RIVER DELTA AND PROTECTIVE LEVEE SYSTEM

DRAWN JULY 6, 1942

Dowd, M.J., *The Colorado River Flood-Protection Works of Imperial Irrigation District: History & Cost* (IID, 1951). FRONTISPIECE—EXHIBIT NO. 1